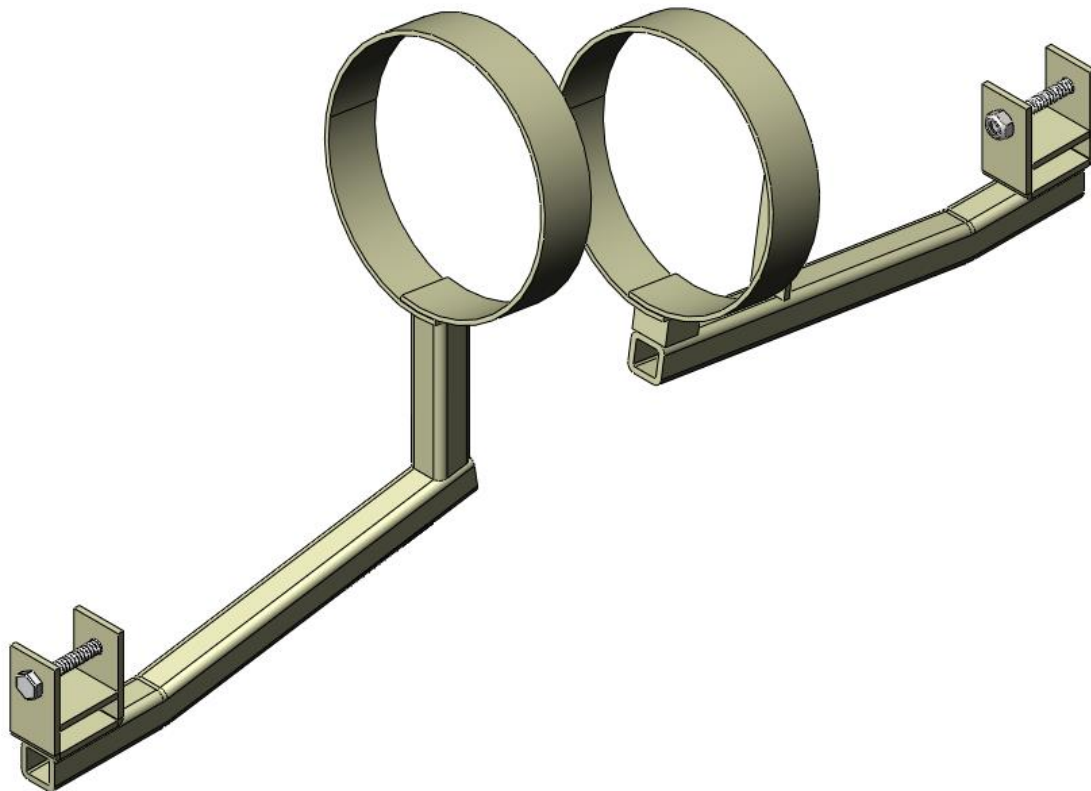




# Field Installation and Usage Instructions

**Part No. TMA04X-15 for X-Series Chairs  
and**

**Part No. TMA183-15 for Non X-Series with Surgical Support Leg**



5516 S.W. 1st Lane – Ocala, FL 34474-9307  
Phone: 1-800-237-3377 - Fax: 1-352-854-9544  
[www.transmotionmedical.com](http://www.transmotionmedical.com)

Document No.: IM TMA04X-15  
Revision: H

# TABLE OF CONTENTS

IMPORTANT NOTES ABOUT THIS MANUAL.....	3
SPECIAL NOTES - SIGNAL WORDS .....	3
TOOLS REQUIRED.....	4
PARTS INCLUDED IN TMA04X-15 & TMA183-15 KITS.....	4
PREPARING CHAIR FOR OXYGEN TANK HOLDER .....	4
INSTALLING OXYGEN TANK HOLDER .....	5
DRILLING HOLES FOR BRACKET.....	7
USING OXYGEN TANK HOLDER.....	7
CAUTIONARY USAGE INSTRUCTIONS.....	8
PREVENTIVE MAINTENANCE .....	8
CLEANING INSTRUCTIONS .....	9
SERVICE INFORMATION.....	11

## IMPORTANT NOTES ABOUT THIS MANUAL

---

This Field Installation and Usage Instruction document is designed to assist you with installation of the TransMotion Medical Product. Carefully read this document thoroughly before using the equipment or doing service/maintenance on it. If you are unable to understand the WARNINGS and CAUTIONS and instructions, contact TransMotion Medical customer service before attempting to operate or service the equipment. Otherwise, injury or damage may result.

To assure safe operation of this device, it is essential that methods and procedures be established for educating and training staff on the safe and effective operation of the product.

TransMotion Medical reserves the right to change specifications without notice.

The information contained in this document is subject to change without notice.

Specifications listed are nominal and may vary slightly from unit to unit due to tolerance variations or power supply variations.

Photographs and illustrations contained within this document may not depict exactly the model you have. This document can cover many closely related models.

## SPECIAL NOTES - SIGNAL WORDS

---

Signal words are used in this manual and apply to hazards which could result in injury or property damage. The following is a definition of those signal words as used in this document:



Indicates an imminently hazardous situation which, if not avoided, will result in death or serious injury.



Indicates a potentially hazardous situation which, if not avoided, could result in death or serious injury.



Indicates a potentially hazardous situation which, if not avoided, may result in minor or moderate injury. It may also be used to alert against unsafe practices or potential property damage hazards.



Provides important information, makes special instructions clearer, or provides service personnel information to make maintenance easier.

## TOOLS REQUIRED

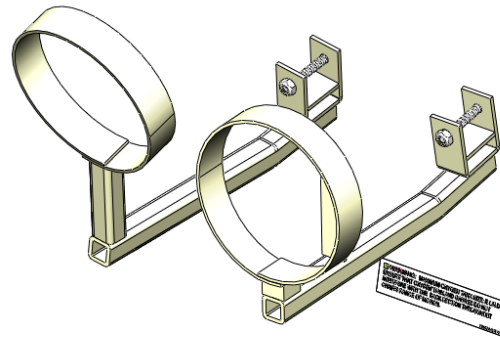
### Tools required to install oxygen tank holder:

- (2) 7/16" Open-Faced Wrench
- (1) .257" Diameter Drill Bit
- (1) Power Drill

## PARTS INCLUDED IN TMA04X-15 KIT

### Verify that you have all the parts shown. If not, contact TMM Service at 1-800-237-3377.

- (1) Rear Holder Bracket
- (1) Front Holder Bracket
- (1) Warning Label
- (2) Bolts
- (2) Lock Nuts



## PREPARING CHAIR FOR OXYGEN TANK HOLDER

Raise chair to maximum height and remove front and rear base covers from your X-Series chair.



### **NOTICE**

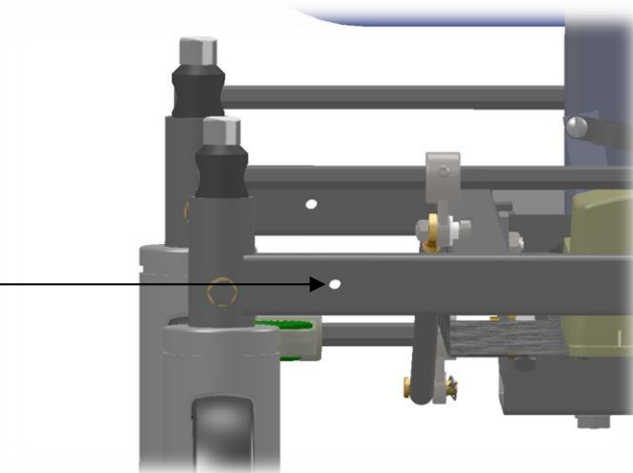
Covers are attached with Velcro.



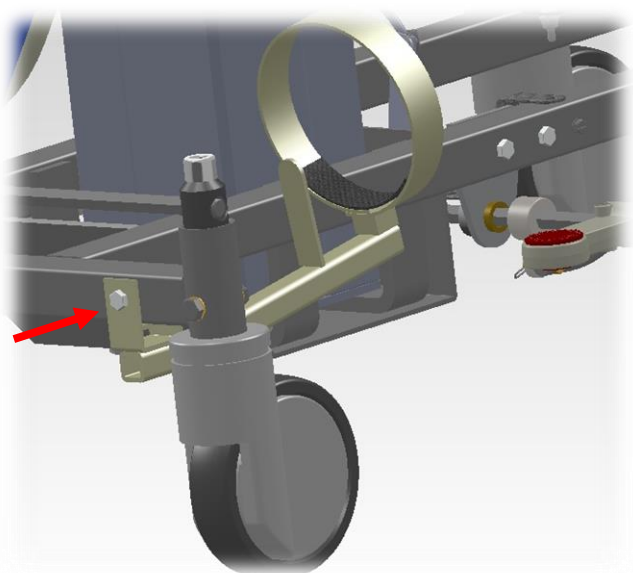
## INSTALLING OXYGEN TANK HOLDER

On left side of base you should see holes in front and rear cross bar of frame as shown.

If there are no holes, jump to and follow "Drilling Holes For Bracket" section.



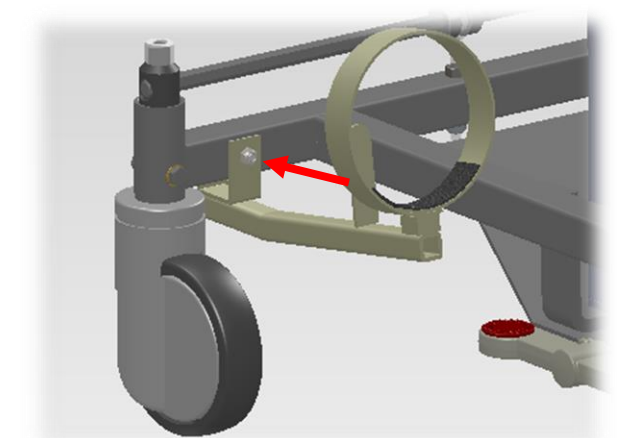
Hold front mounting bracket in line with hole in front of frame and insert bolt completely.



Run nut onto bolt using two 7/16" wrenches until bolt and nut are securely fastened.

### **CAUTION**

Tighten fasteners periodically as routine maintenance of accessory. Loose fasteners may cause safety concerns.

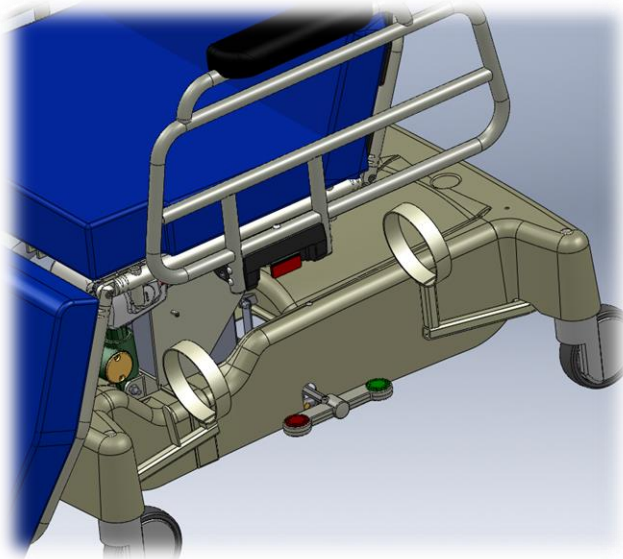


Repeat installation process for rear bracket.

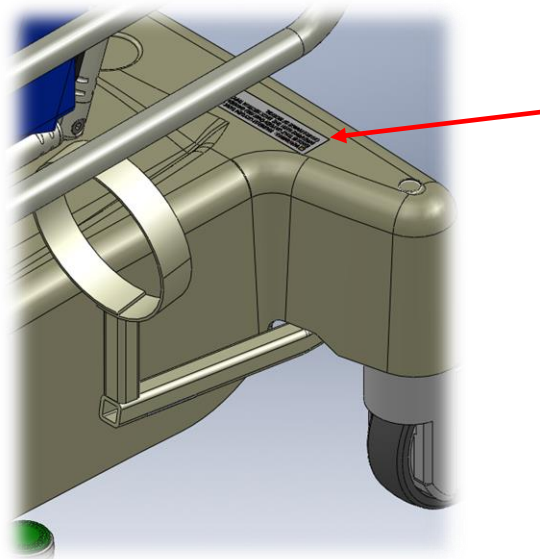


**NOTICE**

Install Oxygen Tank Holder in orientation depicted. Otherwise, interference between oxygen tank and chair may occur during chair adjustment.

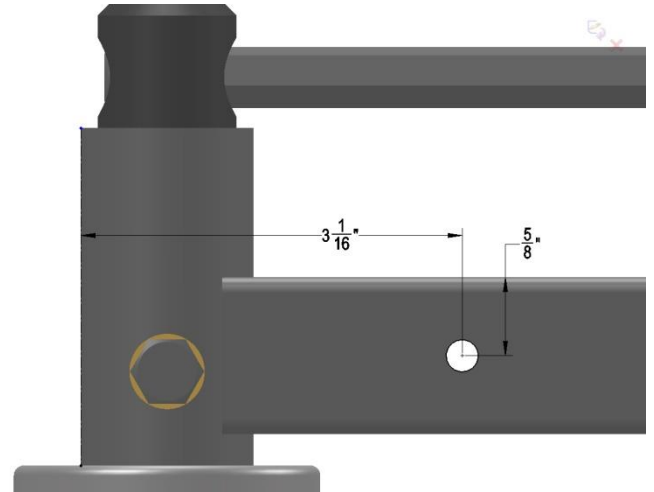


Apply warning label on the back of the base cover at the location shown so that it can be easily read by the chair operator.



## DRILLING HOLES FOR BRACKET

If there are no existing holes on left side of base, drill holes in front and back with .257" diameter drill bit per specs shown to the right.



## USING OXYGEN TANK HOLDER

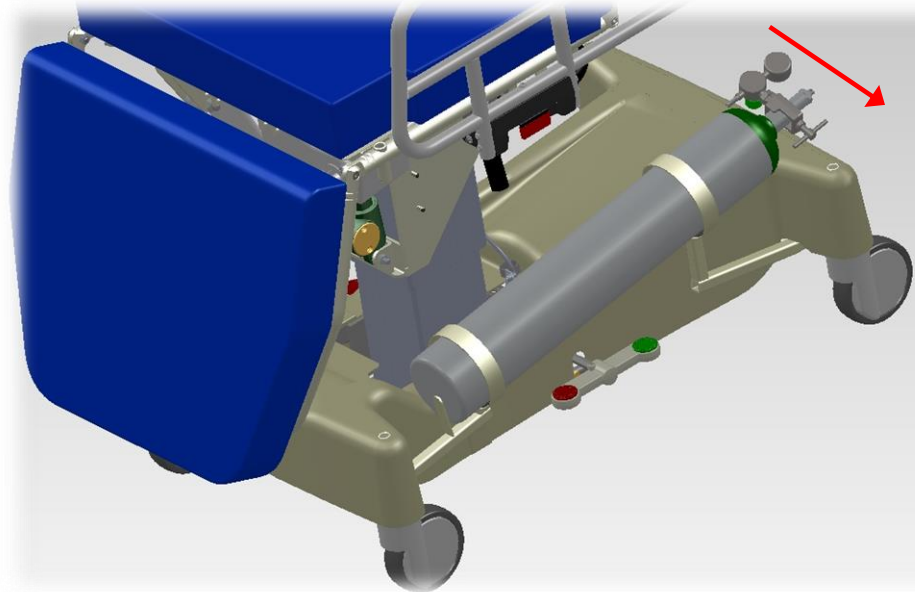
Place oxygen tank into holder. Ensure tank is contacting back stop in order to prevent accidental discharge.

### **CAUTION**

If accessory is exposed to bodily substances, clean thoroughly to prevent spread of diseases.

### **CAUTION**

If possible, position tank gauges so they are parallel to base cover as shown.



## CAUTIONARY USAGE INSTRUCTIONS

---

When using this accessory, please follow these cautionary usage instructions:

**CAUTION** ALWAYS EXERCISE GOOD JUDGMENT WHEN ADJUSTING CHAIR POSITION. BE AWARE OF ALL POSSIBLE CONTACT POINTS AND CONTINUOUSLY MONITOR THESE POINTS WHENEVER CHAIR IS BEING ADJUSTED. STOP ADJUSTING CHAIR IF THE OXYGEN TANK OR ITS GAUGES START TO INTERFERE WITH A COMPONENT OF THE CHAIR.

**CAUTION** BE AWARE THAT THE SIDE RAIL AND BACK SECTION CAN MAKE CONTACT WITH THE OXYGEN TANK WHEN THESE THREE ACTIONS OCCUR SIMULTANEOUSLY:

- 1) SIDE RAILS ARE STOWED IN DOWN POSITION.
- 2) CHAIR IS IN TRENDELENBURG POSITION.
- 3) CHAIR IS LOWERED TO LOWEST POSITION.

BE AWARE OF THESE POSSIBLE CONTACT POINTS AND DO NOT ADJUST CHAIR TO A POSITION WHERE THIS INTERFERENCE OCCURS.

**CAUTION** OXYGEN TANK HOLDER IS DESIGNED FOR SIZE D OR SIZE E TANKS ONLY.

## PREVENTIVE MAINTENANCE

---

To ensure proper operation, this accessory should be inspected and maintained as described below.

COMPONENT	FREQUENCY	PROCEDURE	TOOL	COMMENT
Fastening Hardware	Every three months	Check bolts and tighten as required.	(2) 7/16" Wrench	Loose fasteners could cause accessory interference with chair movement.
Mounting Arms	Every three months	Inspect orientation and positioning of mounting arms to ensure O2 tank is secured and positioned properly.	-	Replace mounting components as needed.



# CLEANING INSTRUCTIONS



STEAM AND/OR PRESSURE CLEANING CHAIR WILL VOID WARRANTY

COMPONENT	FREQUENCY	PROCEDURE	CLEANING AGENT *	COMMENT
All Rails and Painted Metal	As required/in accordance with facility policies	Wipe with damp cloth and allow to air dry	Facility approved detergents, disinfectants & water	Check for chipped paint/chrome
Base Cover	As required/in accordance with facility policies	Wipe with damp cloth and allow to air dry	Facility approved detergents, disinfectants & water	Check for peeling or missing labels
Actuators and Battery Pack	As required/in accordance with facility policies	Wipe with damp cloth and allow to air dry	Facility approved detergents, disinfectants & water	Clean exterior surfaces only with minimal water
Pendants	As required/in accordance with facility policies	Wipe with damp cloth and allow to air dry	Facility approved detergents, disinfectants & water	Clean exterior surfaces only with minimal water
All Other Surfaces	As required/in accordance with facility policies	Wipe with damp cloth and allow to air dry	Facility approved detergents, disinfectants & water	Check for damage
TransMotion Medical Accessories	As required/in accordance with facility policies	Wipe with damp cloth and allow to air dry	Facility approved detergents, disinfectants & water	Check for damage
3rd Party Accessories	As required/in accordance with facility policies	Consult manual provided by accessory manufacturer.		

\* Use of Facility approved detergents and disinfectants must comply with the instructions provided by the manufacturer(s) of those products.

## Upholstery Care & Cleaning Instructions

Proper care is essential in ensuring the durability and reliability of TransMotion Medical upholstery. In general, all products should be:

1. Cleaned
2. Disinfected (in accordance with facility policy)
3. Rinsed
4. Allowed to air dry

It is important to note that the terms “disinfecting” and “cleaning” should not be used interchangeably. Disinfectants alone will not provide adequate cleaning since they do not have the appropriate properties to cut grease or oil and remove grime, hair or skin oils. The appearance, feel and performance of your upholstery may diminish if not cleaned properly.

### Cleaning:

Remove hair, grime and body oils. Your upholstery should be cleaned on a regular basis with a damp cloth soaked in a mild soap and water solution. Avoid harsh detergents or chemicals that could damage the finish of your product. If disinfecting with manufacturer approved chemicals or bleach, the upholstery MUST be wiped off using clean water on a damp cloth and allowed to air-dry as a final step. Failure to rinse upholstery with clean water can result in a build-up of residues that, over time, may lead to drying, cracking or other undesirable changes to appearance, feel and performance.

Retain all instructional tags for future use.

Contact the manufacturer of the fabric used in your upholstery for a current list of approved disinfectants. TransMotion Medical Customer Care can assist with identifying which upholstery was used with your Stretcher-Chair.

For customer supplied and non-standard materials, please refer to the individual manufacturer’s cleaning instructions.

## SERVICE INFORMATION

---

Customer service and support are important aspects of each TransMotion Medical product.

Prior to contacting TransMotion Medical for assistance with your accessory, please **HAVE YOUR CHAIR'S SERIAL NUMBER HANDY.**

Contact TransMotion Medical Service at:

TransMotion Medical  
ATTN: Customer Service  
5516 S.W. 1st Lane  
Ocala, FL 34474-9307  
United States of America

Phone: 1-800-237-3377  
1-352-854-2929

Fax: 1-352-854-9544



Manufacturer of Device:  
TransMotion Medical  
5516 S.W. 1st Lane  
Ocala, FL 34474-9307  
United States of America



Authorized Representative in Europe:  
Emergo Europe  
Molenstraat 15  
2513 BH, The Hague  
The Netherlands

