

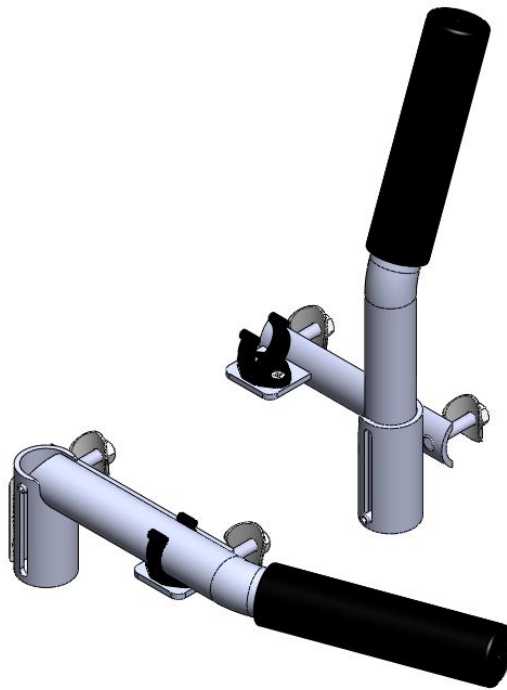


Maintenance and Usage Instructions

Part No. TMA156-15 and TMA163-15

Foot End Push Handles

For all Non-F TMM3, TMM4, and TMM5 Series Chairs



5516 S.W. 1st Lane – Ocala, FL 34474-9307
Phone: 1-800-237-3377 - Fax: 1-352-854-9544
www.transmotionmedical.com

Document No.: IM TMA(156,163)-15
Revision: C

TABLE OF CONTENTS

IMPORTANT NOTES ABOUT THIS MANUAL.....	3
SPECIAL NOTES - SIGNAL WORDS	3
TOOLS REQUIRED.....	4
USING PUSH HANDLES TO MANUEVER STRETCHER-CHAIR	4
CAUTIONARY USAGE INSTRUCTIONS.....	7
PREVENTIVE MAINTENANCE	7
CLEANING INSTRUCTIONS	8

IMPORTANT NOTES ABOUT THIS MANUAL

This Field Installation and Usage Instruction manual is intended to assist you with installation of your TransMotion Medical Product. Carefully read this manual before using the equipment or doing service / maintenance on it. If you are unable to understand the WARNINGS, CAUTIONS, and instructions, contact TransMotion Medical Customer Service before attempting to operate or service the equipment. Otherwise, personal injury or property damage may result.

To ensure safe operation of this device, it is essential that methods and procedures be established for educating and training staff on the safe and effective operation of the product.

TransMotion Medical reserves the right to change specifications without notice.

The information contained in this document is subject to change without notice.

Specifications listed are nominal, and operation may vary slightly from unit to unit due to tolerance variations.

Figures contained within this document may not depict exactly the model you have. This document may cover many closely related models.

SPECIAL NOTES - SIGNAL WORDS

Signal words are used in this manual and apply to hazards which could result in injury or property damage. The following is a definition of those signal words as used in this document:

DANGER

Indicates an imminently hazardous situation which, if not avoided, will result in death or serious injury.

WARNING

Indicates a potentially hazardous situation which, if not avoided, could result in death or serious injury.

CAUTION

Indicates a potentially hazardous situation which, if not avoided, may result in minor or moderate injury. It may also be used to alert against unsafe practices or potential property damage hazards.

NOTICE

Provides important information, makes special instructions clearer, or provides service personnel information to make maintenance easier.

TOOLS REQUIRED

- None



TMA156-15 and TMA163-15 come pre-assembled to a TransMotion Medical Stretcher-Chair. Both accessories are not intended to be installed in the field.

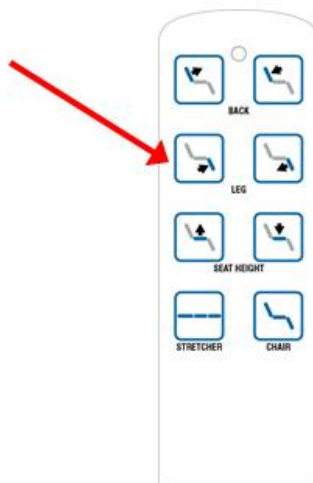
USING PUSH HANDLES TO MANUEVER STRETCHER-CHAIR

- 1) Fully raise the leg section of the stretcher-chair using the pendant.

CAUTION

The push handle accessory is only intended to be used when the leg section is in the stretcher position.

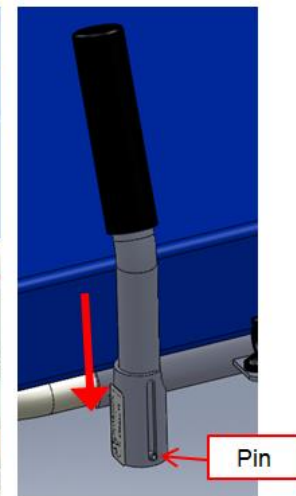
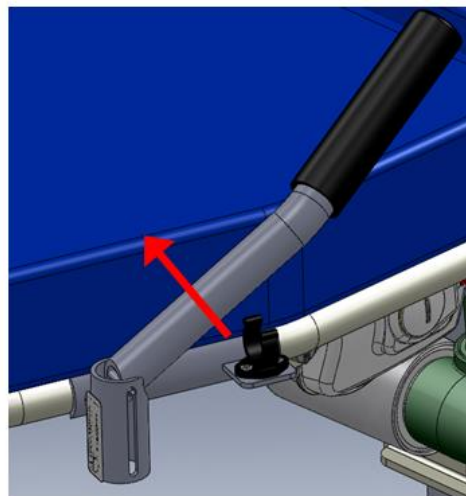
Attempting to use the handles with the leg section in the chair position could result in possible injury to patient or medical personnel.



- 2) Position push handles in the "Up" position by pulling up on handles and lowering into tube.



Ensure push handle is lowered completely into the tube so that the pin is at the bottom of the slot.



- 3) Unlock Casters (stretcher-chair can be in either neutral or drive mode).

The stretcher-chair can now be maneuvered using push handles.

CAUTION

To prevent personal injury to medical personnel and/or patient, do not use foot end push handles to transport the stretcher-chair throughout hospital. The push handles are intended to maneuver the stretcher-chair over short distances in the supine position and not to transport the patient throughout the hospital.



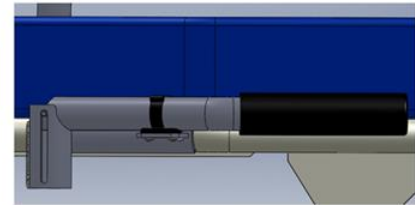
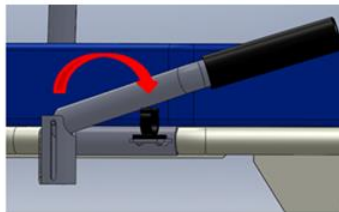
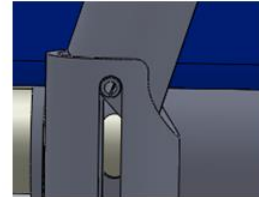
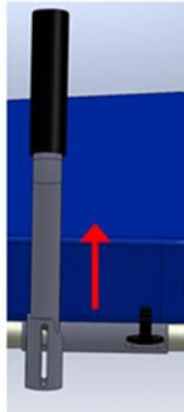
- 4) After the chair has been moved to the desired location, lock the casters.



- 5) Position the push handles in the “Down” position. This can be done by pulling up on the handle until the pin is at the top of the slot. The handle can then be lowered until it is securely stowed in the broom clip.

CAUTION

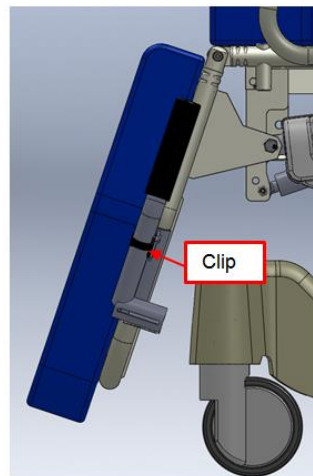
To prevent personal injury to medical personnel and/or patient, use caution when raising or lowering the push handles to ensure fingers or other body parts do not get pinched.



Push handles should always be secured in the clips when not in use.

CAUTION

Leaving the handles in the “Up” position or allowing them to hang free when not in use could result in possible injury to patient or medical personnel.



CAUTIONARY USAGE INSTRUCTIONS

When using this accessory, please follow these cautionary usage instructions:

CAUTION TO PREVENT PERSONAL INJURY TO PATIENT, ENSURE PUSH HANDLES ARE IN THE STORED DOWN POSITION BEFORE A PATIENT ENTERS OR EXITS THE STRETCHER-CHAIR.

CAUTION TO PREVENT PROPERTY DAMAGE OR PERSONAL INJURY TO MEDICAL PERSONNEL AND / OR PATIENT, DO NOT HANG ANYTHING FROM PUSH HANDLES.

CAUTION TO PREVENT PROPERTY DAMAGE, TRANSPORT THE STRETCHER-CHAIR SLOWLY AND CAREFULLY WHEN GOING THROUGH NARROW DOORWAYS AND HALLWAYS TO ENSURE THE PUSH HANDLES DO NOT HIT ANYTHING.

PREVENTIVE MAINTENANCE

To ensure proper operation, this accessory should be inspected and maintained as described below.

COMPONENT	FREQUENCY	PROCEDURE	TOOL	COMMENT
Clip and Hardware	Every three months	Inspect clip and clip mounting hardware.	Phillips screwdriver	Replace clip as needed. Tighten mounting hardware as required.
Push Handle Bracket	Every three months	Inspect mounting hardware.	7/16" wrench	Tighten mounting hardware as required.

Contact TransMotion Medical Service at:

TransMotion Medical
ATTN: Customer Service
5516 S.W. 1st Lane
Ocala, FL 34474-9307
United States of America

Phone: 1-800-237-3377
1-352-854-2929

Fax: 1-352-854-9544

CLEANING INSTRUCTIONS



STEAM AND/OR PRESSURE CLEANING CHAIR WILL VOID WARRANTY

COMPONENT	FREQUENCY	PROCEDURE	CLEANING AGENT *	COMMENT
All Rails and Painted Metal	As required/in accordance with facility policies	Wipe with damp cloth and allow to air dry	Facility approved detergents, disinfectants & water	Check for chipped paint/chrome
Base Cover	As required/in accordance with facility policies	Wipe with damp cloth and allow to air dry	Facility approved detergents, disinfectants & water	Check for peeling or missing labels
Actuators and Battery Pack	As required/in accordance with facility policies	Wipe with damp cloth and allow to air dry	Facility approved detergents, disinfectants & water	Clean exterior surfaces only with minimal water
Pendants	As required/in accordance with facility policies	Wipe with damp cloth and allow to air dry	Facility approved detergents, disinfectants & water	Clean exterior surfaces only with minimal water
All Other Surfaces	As required/in accordance with facility policies	Wipe with damp cloth and allow to air dry	Facility approved detergents, disinfectants & water	Check for damage
TransMotion Medical Accessories	As required/in accordance with facility policies	Wipe with damp cloth and allow to air dry	Facility approved detergents, disinfectants & water	Check for damage
3rd Party Accessories	As required/in accordance with facility policies	Consult manual provided by accessory manufacturer.		

* Use of Facility approved detergents and disinfectants must comply with the instructions provided by the manufacturer(s) of those products.

Upholstery Care & Cleaning Instructions

Proper care is essential in ensuring the durability and reliability of TransMotion Medical upholstery. In general, all products should be:

1. Cleaned
2. Disinfected (in accordance with facility policy)
3. Rinsed
4. Allowed to air dry

It is important to note that the terms “disinfecting” and “cleaning” should not be used interchangeably. Disinfectants alone will not provide adequate cleaning since they do not have the appropriate properties to cut grease or oil and remove grime, hair or skin oils. The appearance, feel and performance of your upholstery may diminish if not cleaned properly.

Cleaning:

Remove hair, grime and body oils. Your upholstery should be cleaned on a regular basis with a damp cloth soaked in a mild soap and water solution. Avoid harsh detergents or chemicals that could damage the finish of your product. If disinfecting with manufacturer approved chemicals or bleach, the upholstery MUST be wiped off using clean water on a damp cloth and allowed to air-dry as a final step. Failure to rinse upholstery with clean water can result in a build-up of residues that, over time, may lead to drying, cracking or other undesirable changes to appearance, feel and performance.

Retain all instructional tags for future use.

Contact the manufacturer of the fabric used in your upholstery for a current list of approved disinfectants. TransMotion Medical Customer Care can assist with identifying which upholstery was used with your Stretcher-Chair.

For customer supplied and non-standard materials, please refer to the individual manufacturer’s cleaning instructions.